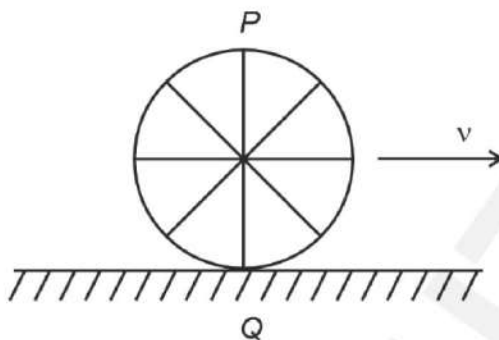


# PHYSICS

## SECTION-A

1. A wheel of a bullock cart is rolling on a level road as shown in the figure below. If its linear speed is  $v$  in the direction shown, which one of the following options is correct ( $P$  and  $Q$  are any highest and lowest points on the wheel, respectively)?



- (1) Point  $P$  moves faster than point  $Q$                       (2) Both the points  $P$  and  $Q$  move with equal speed  
 (3) Point  $P$  has zero speed                                      (4) Point  $P$  moves slower than point  $Q$

**Answer (1)**

2. Match List I with List II.

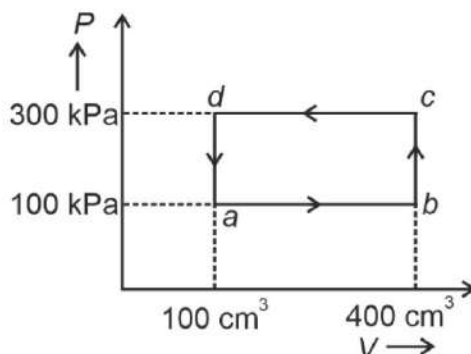
	List I (Spectral Lines of Hydrogen for transitions from)		List II (Wavelengths (nm))
A.	$n_2 = 3$ to $n_1 = 2$	I.	410.2
B.	$n_2 = 4$ to $n_1 = 2$	II.	434.1
C.	$n_2 = 5$ to $n_1 = 2$	III.	656.3
D.	$n_2 = 6$ to $n_1 = 2$	IV.	486.1

Choose the correct answer from the options given below:

- (1) A-III, B-IV, C-II, D-I                                      (2) A-IV, B-III, C-I, D-II  
 (3) A-I, B-II, C-III, D-IV                                      (4) A-II, B-I, C-IV, D-III

**Answer (1)**

3. A thermodynamic system is taken through the cycle  $abcd$ . The work done by the gas along the path  $bc$  is:



(1) 30 J

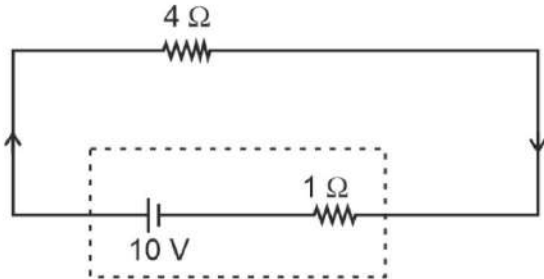
(2) -90 J

(3) -60 J

(4) Zero

**Answer (4)**

4. The terminal voltage of the battery, whose emf is 10 V and internal resistance 1  $\Omega$ , when connected through an external resistance of 4  $\Omega$  as shown in the figure is:



(1) 6 V

(2) 8 V

(3) 10 V

(4) 4 V

**Answer (2)**

5. In an ideal transformer, the turns ratio is  $\frac{N_P}{N_S} = \frac{1}{2}$ . The ratio  $V_S : V_P$  is equal to (the symbols carry their usual meaning) :

(1) 2 : 1

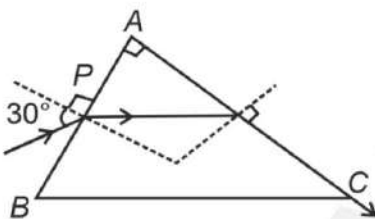
(2) 1 : 1

(3) 1 : 4

(4) 1 : 2

**Answer (1)**

6. A light ray enters through a right angled prism at point  $P$  with the angle of incidence  $30^\circ$  as shown in figure. It travels through the prism parallel to its base  $BC$  and emerges along the face  $AC$ . The refractive index of the prism is:



(1)  $\frac{\sqrt{5}}{2}$

(2)  $\frac{\sqrt{3}}{4}$

(3)  $\frac{\sqrt{3}}{2}$

(4)  $\frac{\sqrt{5}}{4}$

**Answer (1)**

7. The quantities which have the same dimensions as those of solid angle are:

(1) stress and angle

(2) strain and arc

(3) angular speed and stress

(4) strain and angle

**Answer (4)**

8. A thin flat circular disc of radius 4.5 cm is placed gently over the surface of water. If surface tension of water is  $0.07 \text{ N m}^{-1}$ , then the excess force required to take it away from the surface is

- (1) 198 N
- (2) 1.98 mN
- (3) 99 N
- (4) 19.8 mN

**Answer (4)**

9. Given below are two statements: one is labelled as **Assertion A** and the other is labelled as **Reason R**.

**Assertion A:** The potential ( $V$ ) at any axial point, at 2 m distance ( $r$ ) from the centre of the dipole of dipole moment vector  $\vec{P}$  of magnitude,  $4 \times 10^{-6} \text{ C m}$ , is  $\pm 9 \times 10^3 \text{ V}$ .

(Take  $\frac{1}{4\pi\epsilon_0} = 9 \times 10^9 \text{ SI units}$ )

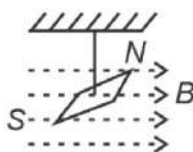
**Reason R:**  $V = \pm \frac{2P}{4\pi\epsilon_0 r^2}$ , where  $r$  is the distance of any axial point, situated at 2 m from the centre of the dipole.

In the light of the above statements, choose the **correct** answer from the options given below:

- (1) Both A and R are true and R is NOT the correct explanation of A.
- (2) A is true but R is false.
- (3) A is false but R is true.
- (4) Both A and R are true and R is the correct explanation of A.

**Answer (2)**

10. In a uniform magnetic field of 0.049 T, a magnetic needle performs 20 complete oscillations in 5 seconds as shown. The moment of inertia of the needle is  $9.8 \times 10^{-6} \text{ kg m}^2$ . If the magnitude of magnetic moment of the needle is  $x \times 10^{-5} \text{ Am}^2$ , then the value of 'x' is :



- (1)  $128\pi^2$
- (2)  $50\pi^2$
- (3)  $1280\pi^2$
- (4)  $5\pi^2$

**Answer (3)**

11. If the monochromatic source in Young's double slit experiment is replaced by white light, then

- (1) There will be a central dark fringe surrounded by a few coloured fringes
- (2) There will be a central bright white fringe surrounded by a few coloured fringes
- (3) All bright fringes will be of equal width
- (4) Interference pattern will disappear

**Answer (2)**

12. Given below are two statements:

**Statement I:** Atoms are electrically neutral as they contain equal number of positive and negative charges.

**Statement II:** Atoms of each element are stable and emit their characteristic spectrum.

In the light of the above statements, choose the *most appropriate* answer from the options given below.

- (1) Both Statement I and Statement II are incorrect
- (2) Statement I is correct but Statement II is incorrect
- (3) Statement I is incorrect but Statement II is correct
- (4) Both Statement I and Statement II are correct

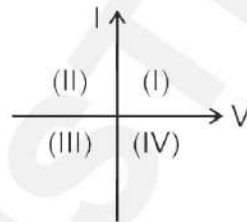
**Answer (2)**

13. The maximum elongation of a steel wire of 1 m length if the elastic limit of steel and its Young's modulus, respectively, are  $8 \times 10^8 \text{ N m}^{-2}$  and  $2 \times 10^{11} \text{ N m}^{-2}$ , is:

- (1) 0.4 mm
- (2) 40 mm
- (3) 8 mm
- (4) 4 mm

**Answer (4)**

14. Consider the following statements A and B and identify the correct answer:



- A. For a solar-cell, the I-V characteristics lies in the IV quadrant of the given graph.
- B. In a reverse biased *pn* junction diode, the current measured in ( $\mu\text{A}$ ), is due to majority charge carriers.

- (1) A is incorrect but B is correct
- (2) Both A and B are correct
- (3) Both A and B are incorrect
- (4) A is correct but B is incorrect

**Answer (4)**

15. A particle moving with uniform speed in a circular path maintains:

- (1) Constant acceleration
- (2) Constant velocity but varying acceleration
- (3) Varying velocity and varying acceleration
- (4) Constant velocity

**Answer (3)**

16. If  $c$  is the velocity of light in free space, the correct statements about photon among the following are:

- A. The energy of a photon is  $E = h\nu$ .
- B. The velocity of a photon is  $c$ .
- C. The momentum of a photon,  $p = \frac{h\nu}{c}$ .
- D. In a photon-electron collision, both total energy and total momentum are conserved.
- E. Photon possesses positive charge.

Choose the correct answer from the options given below:

- (1) A, B, C and D only (2) A, C and D only  
(3) A, B, D and E only (4) A and B only

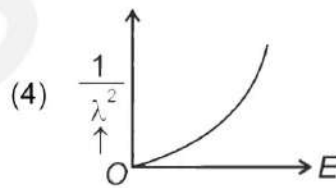
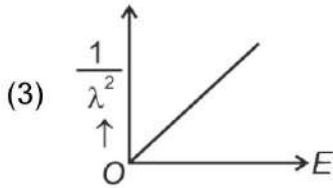
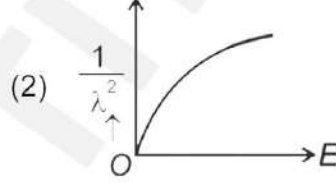
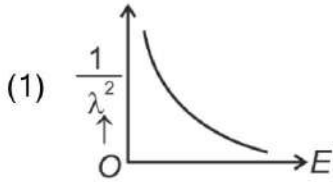
**Answer (1)**

17. Two bodies *A* and *B* of same mass undergo completely inelastic one dimensional collision. The body *A* moves with velocity  $v_1$  while body *B* is at rest before collision. The velocity of the system after collision is  $v_2$ . The ratio  $v_1 : v_2$  is

- (1) 2 : 1 (2) 4 : 1  
(3) 1 : 4 (4) 1 : 2

**Answer (1)**

18. The graph which shows the variation of  $\left(\frac{1}{\lambda^2}\right)$  and its kinetic energy,  $E$  is (where  $\lambda$  is de Broglie wavelength of a free particle):



**Answer (3)**

19. An unpolarised light beam strikes a glass surface at Brewster's angle. Then

- (1) The refracted light will be completely polarised.  
(2) Both the reflected and refracted light will be completely polarised.  
(3) The reflected light will be completely polarised but the refracted light will be partially polarised.  
(4) The reflected light will be partially polarised.

**Answer (3)**

20. At any instant of time  $t$ , the displacement of any particle is given by  $2t - 1$  (SI unit) under the influence of force of 5 N. The value of instantaneous power is (in SI unit):

- (1) 5  
(2) 7  
(3) 6  
(4) 10

**Answer (4)**

21. A tightly wound 100 turns coil of radius 10 cm carries a current of 7 A. The magnitude of the magnetic field at the centre of the coil is (Take permeability of free space as  $4\pi \times 10^{-7}$  SI units):

- (1) 4.4 T (2) 4.4 mT  
 (3) 44 T (4) 44 mT

**Answer (2)**

22. The moment of inertia of a thin rod about an axis passing through its mid point and perpendicular to the rod is  $2400 \text{ g cm}^2$ . The length of the 400 g rod is nearly:

- (1) 17.5 cm (2) 20.7 cm  
 (3) 72.0 cm (4) 8.5 cm

**Answer (4)**

23. A bob is whirled in a horizontal plane by means of a string with an initial speed of  $\omega$  rpm. The tension in the string is  $T$ . If speed becomes  $2\omega$  while keeping the same radius, the tension in the string becomes:

- (1)  $4T$  (2)  $\frac{T}{4}$   
 (3)  $\sqrt{2}T$  (4)  $T$

**Answer (1)**

24. Match List-I with List-II.

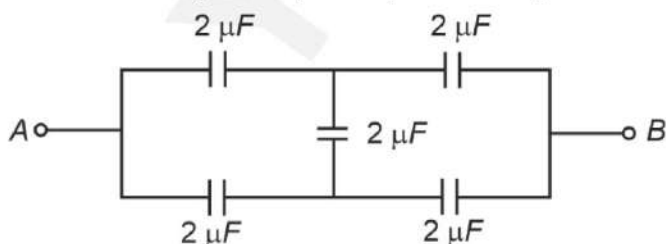
List-I (Material)	List-II (Susceptibility ( $\chi$ ))
A. Diamagnetic	I. $\chi = 0$
B. Ferromagnetic	II. $0 > \chi \geq -1$
C. Paramagnetic	III. $\chi \gg 1$
D. Non-magnetic	IV. $0 < \chi < \epsilon$ (a small positive number)

Choose the correct answer from the options given below

- (1) A-II, B-I, C-III, D-IV (2) A-III, B-II, C-I, D-IV  
 (3) A-IV, B-III, C-II, D-I (4) A-II, B-III, C-IV, D-I

**Answer (4)**

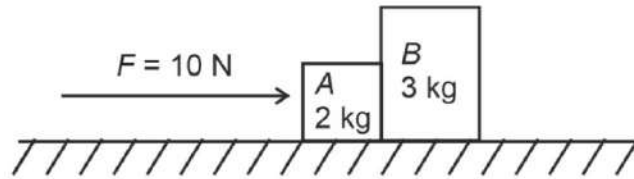
25. In the following circuit, the equivalent capacitance between terminal A and terminal B is :



- (1)  $1 \mu\text{F}$  (2)  $0.5 \mu\text{F}$   
 (3)  $4 \mu\text{F}$  (4)  $2 \mu\text{F}$

**Answer (4)**  $= 2 \mu\text{F}$

26. A horizontal force 10 N is applied to a block A as shown in figure. The mass of blocks A and B are 2 kg and 3 kg respectively. The blocks slide over a frictionless surface. The force exerted by block A on block B is :



- (1) 4 N (2) 6 N  
(3) 10 N (4) Zero

**Answer (2)**

27.  ${}_{82}^{290}\text{X} \xrightarrow{\alpha} \text{Y} \xrightarrow{e^+} \text{Z} \xrightarrow{\beta^-} \text{P} \xrightarrow{e^-} \text{Q}$

In the nuclear emission stated above, the mass number and atomic number of the product Q respectively, are

- (1) 286, 80 (2) 288, 82  
(3) 286, 81 (4) 280, 81

**Answer (3)**

28. In a vernier callipers,  $(N + 1)$  divisions of vernier scale coincide with  $N$  divisions of main scale. If 1 MSD represents 0.1 mm, the vernier constant (in cm) is:

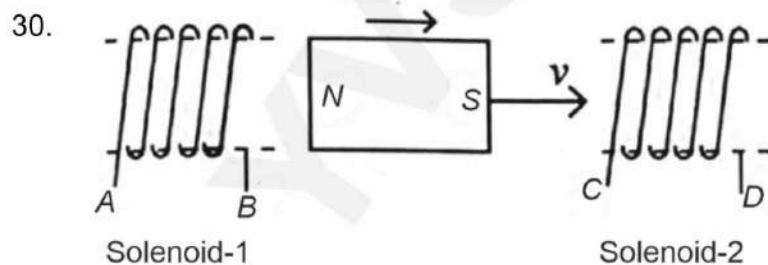
- (1)  $\frac{1}{100(N+1)}$  (2) 100N  
(3)  $10(N+1)$  (4)  $\frac{1}{10N}$

**Answer (1)**

29. If  $x = 5\sin\left(\pi t + \frac{\pi}{3}\right)$  m represents the motion of a particle executing simple harmonic motion, the amplitude and time period of motion, respectively, are

- (1) 5 m, 2 s (2) 5 cm, 1 s  
(3) 5 m, 1 s (4) 5 cm, 2 s

**Answer (1)**



In the above diagram, a strong bar magnet is moving towards solenoid-2 from solenoid-1. The direction of induced current in solenoid-1 and that in solenoid-2, respectively, are through the directions:

- (1) BA and CD (2) AB and CD  
(3) BA and DC (4) AB and DC

**Answer (4)**

31. A logic circuit provides the output  $Y$  as per the following truth table :

A	B	Y
0	0	1
0	1	0
1	0	1
1	1	0

The expression for the output  $Y$  is :

- (1)  $A\bar{B} + \bar{A}$  (2)  $\bar{B}$   
 (3)  $B$  (4)  $A.B + \bar{A}$

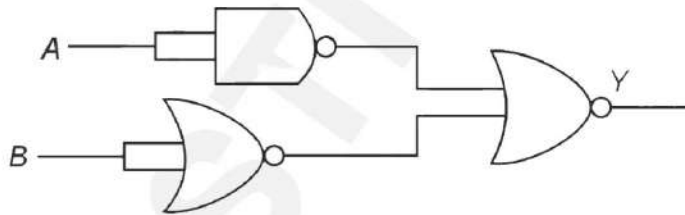
**Answer (2)**

32. A wire of length ' $l$ ' and resistance  $100 \Omega$  is divided into 10 equal parts. The first 5 parts are connected in series while the next 5 parts are connected in parallel. The two combinations are again connected in series. The resistance of this final combination is:

- (1)  $52 \Omega$  (2)  $55 \Omega$   
 (3)  $60 \Omega$  (4)  $26 \Omega$

**Answer (1)**

33. The output ( $Y$ ) of the given logic gate is similar to the output of an/a

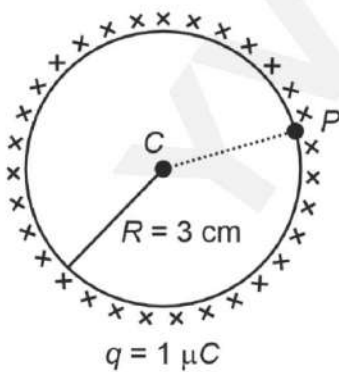


- (1) NOR gate (2) OR gate  
 (3) AND gate (4) NAND gate

**Answer (3)**

34. A thin spherical shell is charged by some source. The potential difference between the two points  $C$  and  $P$  (in  $V$ ) shown in the figure is:

(Take  $\frac{1}{4\pi\epsilon_0} = 9 \times 10^9$  SI units)



- (1)  $1 \times 10^5$  (2)  $0.5 \times 10^5$   
 (3) Zero (4)  $3 \times 10^5$

**Answer (3)**



35. The mass of a planet is  $\frac{1}{10}$ th that of the earth and its diameter is half that of the earth. The acceleration due to gravity on that planet is:

- (1)  $9.8 \text{ m s}^{-2}$  (2)  $4.9 \text{ m s}^{-2}$   
 (3)  $3.92 \text{ m s}^{-2}$  (4)  $19.6 \text{ m s}^{-2}$

**Answer (3)**

### SECTION-B

36. The minimum energy required to launch a satellite of mass  $m$  from the surface of earth of mass  $M$  and radius  $R$  in a circular orbit at an altitude of  $2R$  from the surface of the earth is:

- (1)  $\frac{2GmM}{3R}$  (2)  $\frac{GmM}{2R}$   
 (3)  $\frac{GmM}{3R}$  (4)  $\frac{5GmM}{6R}$

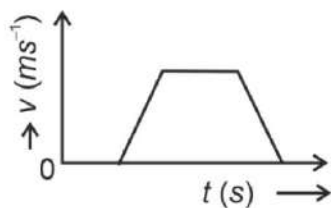
**Answer (4)**

37. A small telescope has an objective of focal length 140 cm and an eye piece of focal length 5.0 cm. The magnifying power of telescope for viewing a distant object is:

- (1) 28 (2) 17  
 (3) 32 (4) 34

**Answer (1)**

38. The velocity ( $v$ ) – time ( $t$ ) plot of the motion of a body is shown below:



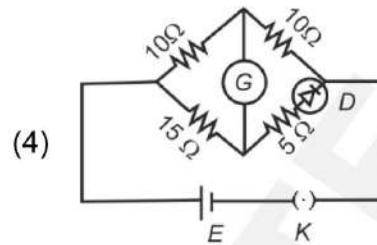
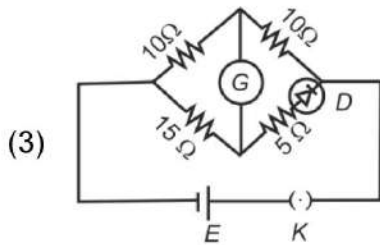
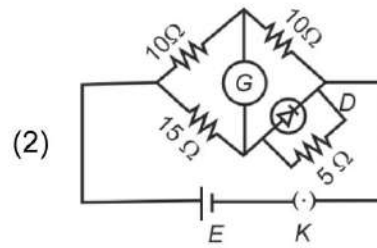
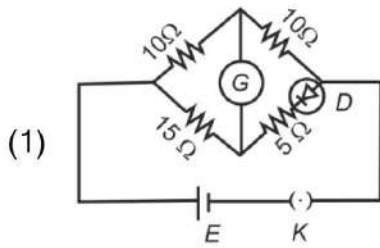
The acceleration ( $a$ ) – time ( $t$ ) graph that best suits this motion is :

- (1) (2)   
 (3) (4)

**Answer (2)**



44. Choose the correct circuit which can achieve the bridge balance.



**Answer (4)**

45. A sheet is placed on a horizontal surface in front of a strong magnetic pole. A force is needed to:

- A. hold the sheet there if it is magnetic.
- B. hold the sheet there if it is non-magnetic.
- C. move the sheet away from the pole with uniform velocity if it is conducting.
- D. move the sheet away from the pole with uniform velocity if it is both, non-conducting and non-polar.

Choose the correct statement(s) from the options given below:

- (1) A and C only
- (2) A, C and D only
- (3) C only
- (4) B and D only

**Answer (1)**

46. If the plates of a parallel plate capacitor connected to a battery are moved close to each other, then

- A. the charge stored in it, increases.
- B. the energy stored in it, decreases.
- C. its capacitance increases.
- D. the ratio of charge to its potential remains the same.
- E. the product of charge and voltage increases.

Choose the most appropriate answer from the options given below:

- (1) A, C and E only
- (2) B, D and E only
- (3) A, B and C only
- (4) A, B and E only

**Answer (1)**



# CHEMISTRY

## SECTION-A

51. The reagents with which glucose does **not** react to give the corresponding tests/products are

- A. Tollen's reagent
- B. Schiff's reagent
- C. HCN
- D.  $\text{NH}_2\text{OH}$
- E.  $\text{NaHSO}_3$

Choose the correct options from the given below:

- (1) A and D
- (2) B and E
- (3) E and D
- (4) B and C

**Answer (2)**

52. The energy of an electron in the ground state ( $n = 1$ ) for  $\text{He}^+$  ion is  $-x$  J, then that for an electron in  $n = 2$  state for  $\text{Be}^{3+}$  ion in J is

- (1)  $-\frac{x}{9}$
- (2)  $-4x$
- (3)  $-\frac{4}{9}x$
- (4)  $-x$

**Answer (4)**

53. Which reaction is **NOT** a redox reaction?

- (1)  $2\text{KClO}_3 + \text{I}_2 \rightarrow 2\text{KIO}_3 + \text{Cl}_2$
- (2)  $\text{H}_2 + \text{Cl}_2 \rightarrow 2\text{HCl}$
- (3)  $\text{BaCl}_2 + \text{Na}_2\text{SO}_4 \rightarrow \text{BaSO}_4 + 2\text{NaCl}$
- (4)  $\text{Zn} + \text{CuSO}_4 \rightarrow \text{ZnSO}_4 + \text{Cu}$

**Answer (3)**

54. Match List I with List II.

**List-I**

**(Process)**

- A. Isothermal process
- B. Isochoric process
- C. Isobaric process
- D. Adiabatic process

**List-II**

**(Conditions)**

- I. No heat exchange
- II. Carried out at constant temperature
- III. Carried out at constant volume
- IV. Carried out at constant pressure

Choose the correct answer from the options given below:

- (1) A-IV, B-II, C-III, D-I
- (2) A-I, B-II, C-III, D-IV
- (3) A-II, B-III, C-IV, D-I
- (4) A-IV, B-III, C-II, D-I

**Answer (3)**

55. For the reaction  $2A \rightleftharpoons B + C$ ,  $K_C = 4 \times 10^{-3}$ . At a given time, the composition of reaction mixture is:  $[A] = [B] = [C] = 2 \times 10^{-3}$  M.

Then, which of the following is correct?

- (1) Reaction has a tendency to go in forward direction.
- (2) Reaction has a tendency to go in backward direction.
- (3) Reaction has gone to completion in forward direction.
- (4) Reaction is at equilibrium.

**Answer (2)**

56. Match List I with List II.

**List I (Complex)**

- A.  $[\text{Co}(\text{NH}_3)_5(\text{NO}_2)]\text{Cl}_2$
- B.  $[\text{Co}(\text{NH}_3)_5(\text{SO}_4)]\text{Br}$
- C.  $[\text{Co}(\text{NH}_3)_6][\text{Cr}(\text{CN})_6]$
- D.  $[\text{Co}(\text{H}_2\text{O})_6]\text{Cl}_3$

**List II (Type of isomerism)**

- I. Solvate isomerism
- II. Linkage isomerism
- III. Ionization isomerism
- IV. Coordination isomerism

Choose the correct answer from the options given below:

- (1) A-I, B-III, C-IV, D-II
- (2) A-I, B-IV, C-III, D-II
- (3) A-II, B-IV, C-III, D-I
- (4) A-II, B-III, C-IV, D-I

**Answer (4)**

57. In which of the following processes entropy increases?

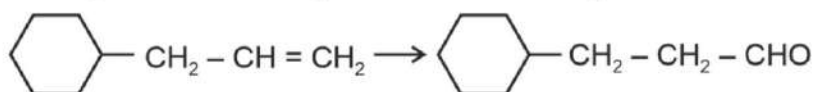
- A. A liquid evaporates to vapour.
- B. Temperature of a crystalline solid lowered from 130 K to 0 K.
- C.  $2\text{NaHCO}_3(\text{s}) \rightarrow \text{Na}_2\text{CO}_3(\text{s}) + \text{CO}_2(\text{g}) + \text{H}_2\text{O}(\text{g})$
- D.  $\text{Cl}_2(\text{g}) \rightarrow 2\text{Cl}(\text{g})$

Choose the correct answer from the options given below:

- (1) A, B and D
- (2) A, C and D
- (3) C and D
- (4) A and C

**Answer (2)**

58. Identify the correct reagents that would bring about the following transformation.

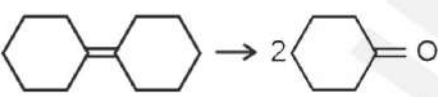
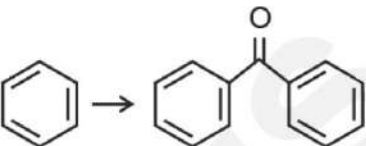
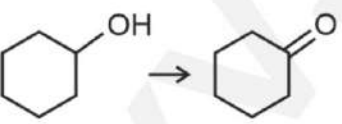
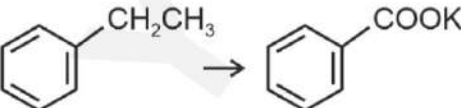


- (1) (i)  $\text{BH}_3$   
 (ii)  $\text{H}_2\text{O}_2 / \text{OH}^-$   
 (iii) PCC
- (2) (i)  $\text{BH}_3$   
 (ii)  $\text{H}_2\text{O}_2 / \text{OH}^-$   
 (iii) alk.  $\text{KMnO}_4$   
 (iv)  $\text{H}_3\text{O}^+$
- (3) (i)  $\text{H}_2\text{O}/\text{H}^+$   
 (ii) PCC
- (4) (i)  $\text{H}_2\text{O}/\text{H}^+$   
 (ii)  $\text{CrO}_3$

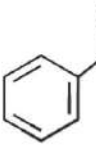
**Answer (1)**

59. Match List I with List II.

**List I**  
**(Reaction)**

- A. 
- B. 
- C. 
- D. 

**List II**  
**(Reagents/Condition)**

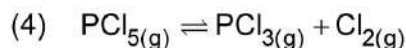
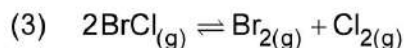
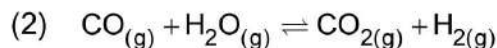
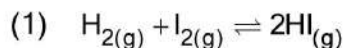
- I.   $\text{Cl}/\text{Anhyd. AlCl}_3$
- II.  $\text{CrO}_3$
- III.  $\text{KMnO}_4/\text{KOH}, \Delta$
- IV. (i)  $\text{O}_3$   
 (ii)  $\text{Zn-H}_2\text{O}$

Choose the correct answer from the options given below:

- (1) A-III, B-I, C-II, D-IV  
 (2) A-IV, B-I, C-II, D-III  
 (3) A-I, B-IV, C-II, D-III  
 (4) A-IV, B-I, C-III, D-II

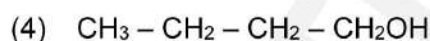
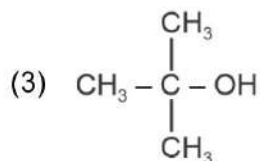
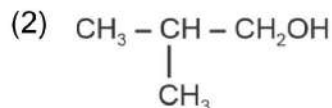
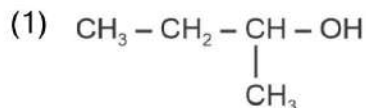
**Answer (2)**

60. In which of the following equilibria,  $K_p$  and  $K_c$  are **NOT** equal?



**Answer (4)**

61. Which one of the following alcohols reacts instantaneously with Lucas reagent?



**Answer (3)**

62. Given below are two statements:

**Statement I :** The boiling point of three isomeric pentanes follows the order  
n-pentane > isopentane > neopentane

**Statement II :** When branching increases, the molecule attains a shape of sphere. This results in smaller surface area for contact, due to which the intermolecular forces between the spherical molecules are weak, thereby lowering the boiling point.

In the light of the above statements, choose the *most appropriate* answer from the options given below:

- (1) Both Statement I and Statement II are incorrect  
(2) Statement I is correct but Statement II is incorrect  
(3) Statement I is incorrect but Statement II is correct  
(4) Both Statement I and Statement II are correct

**Answer (4)**

63. Given below are two statements:

**Statement I :** Aniline does not undergo Friedel-Crafts alkylation reaction.

**Statement II :** Aniline cannot be prepared through Gabriel synthesis.

In the light of the above statements, choose the correct answer from the options given below:

- (1) Both Statement I and Statement II are false      (2) Statement I is correct but Statement II is false  
(3) Statement I is incorrect but Statement II is true      (4) Both statement I and Statement II are true

**Answer (4)**

64. The  $E^\circ$  value for the  $\text{Mn}^{3+}/\text{Mn}^{2+}$  couple is more positive than that of  $\text{Cr}^{3+}/\text{Cr}^{2+}$  or  $\text{Fe}^{3+}/\text{Fe}^{2+}$  due to change of

- (1)  $d^5$  to  $d^2$  configuration      (2)  $d^4$  to  $d^5$  configuration  
(3)  $d^3$  to  $d^5$  configuration      (4)  $d^5$  to  $d^4$  configuration

**Answer (2)**



70. Match List I with List II.

**List I**

**(Conversion)**

- A. 1 mol of  $\text{H}_2\text{O}$  to  $\text{O}_2$   
B. 1 mol of  $\text{MnO}_4^-$  to  $\text{Mn}^{2+}$   
C. 1.5 mol of Ca from molten  $\text{CaCl}_2$   
D. 1 mol of  $\text{FeO}$  to  $\text{Fe}_2\text{O}_3$

**List II**

**(Number of Faraday required)**

- I. 3F  
II. 2F  
III. 1F  
IV. 5F

Choose the correct answer from the options given below:

- (1) A-III, B-IV, C-I, D-II  
(2) A-II, B-III, C-I, D-IV  
(3) A-III, B-IV, C-II, D-I  
(4) A-II, B-IV, C-I, D-III

**Answer (4)**

71. Among Group 16 elements, which one does **NOT** show  $-2$  oxidation state?

- (1) Se  
(2) Te  
(3) Po  
(4) O

**Answer (3)**

72. 'Spin only' magnetic moment is same for which of the following ions?

- A.  $\text{Tl}^{3+}$   
B.  $\text{Cr}^{2+}$   
C.  $\text{Mn}^{2+}$   
D.  $\text{Fe}^{2+}$   
E.  $\text{Sc}^{3+}$

Choose the most appropriate answer from the options given below.

- (1) A and E only  
(2) B and C only  
(3) A and D only  
(4) B and D only

**Answer (4)**

73. A compound with a molecular formula of  $\text{C}_6\text{H}_{14}$  has two tertiary carbons. Its IUPAC name is :

- (1) 2-methylpentane  
(2) 2,3-dimethylbutane  
(3) 2,2-dimethylbutane  
(4) n-hexane

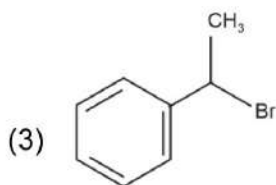
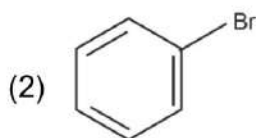
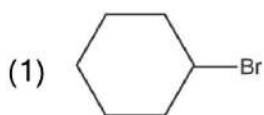
**Answer (2)**

74. The Henry's law constant ( $K_H$ ) values of three gases (A, B, C) in water are 145,  $2 \times 10^{-5}$  and 35 kbar, respectively. The solubility of these gases in water follow the order:

- (1)  $B > C > A$   
(2)  $A > C > B$   
(3)  $A > B > C$   
(4)  $B > A > C$

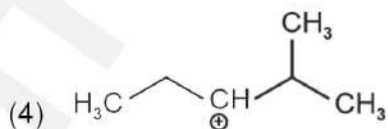
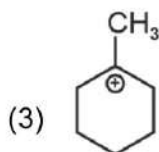
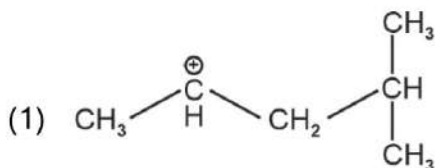
**Answer (1)**

75. The compound that will undergo  $S_N1$  reaction with the fastest rate is



**Answer (3)**

76. The most stable carbocation among the following is :



**Answer (3)**

77. Given below are two statements :

**Statement I:** Both  $[\text{Co}(\text{NH}_3)_6]^{3+}$  and  $[\text{CoF}_6]^{3-}$  complexes are octahedral but differ in their magnetic behaviour.

**Statement II:**  $[\text{Co}(\text{NH}_3)_6]^{3+}$  is diamagnetic whereas  $[\text{CoF}_6]^{3-}$  is paramagnetic.

In the light of the above statements, choose the correct answer from the options given below:

(1) Both Statement I and Statement II are false

(2) Statement I is true but Statement II is false

(3) Statement I is false but Statement II is true

(4) Both Statement I and Statement II are true

**Answer (4)**

78. 1 gram of sodium hydroxide was treated with 25 mL of 0.75 M HCl solution, the mass of sodium hydroxide left unreacted is equal to

(1) 250 mg

(2) Zero mg

(3) 200 mg

(4) 750 mg

**Answer (1)**

79. Given below are two statements:

**Statement I:** The boiling point of hydrides of Group 16 elements follow the order



**Statement II:** On the basis of molecular mass,  $\text{H}_2\text{O}$  is expected to have lower boiling point than the other members of the group but due to the presence of extensive H-bonding in  $\text{H}_2\text{O}$ , it has higher boiling point.

In the light of the above statements, choose the correct answer from the options given below:

- (1) Both Statement I and Statement II are false
- (2) Statement I is true but Statement II is false
- (3) Statement I is false but Statement II is true
- (4) Both Statement I and Statement II are true

**Answer (4)**

80. Arrange the following elements in increasing order of first ionization enthalpy:

Li, Be, B, C, N

Choose the correct answer from the options given below:

- (1)  $\text{Li} < \text{B} < \text{Be} < \text{C} < \text{N}$
- (2)  $\text{Li} < \text{Be} < \text{C} < \text{B} < \text{N}$
- (3)  $\text{Li} < \text{Be} < \text{N} < \text{B} < \text{C}$
- (4)  $\text{Li} < \text{Be} < \text{B} < \text{C} < \text{N}$

**Answer (1)**

81. Activation energy of any chemical reaction can be calculated if one knows the value of

- (1) probability of collision
- (2) orientation of reactant molecules during collision
- (3) rate constant at two different temperatures
- (4) rate constant at standard temperature

**Answer (3)**

82. Arrange the following elements in increasing order of electronegativity:

N, O, F, C, Si

Choose the correct answer from the options given below:

- (1)  $\text{Si} < \text{C} < \text{O} < \text{N} < \text{F}$
- (2)  $\text{O} < \text{F} < \text{N} < \text{C} < \text{Si}$
- (3)  $\text{F} < \text{O} < \text{N} < \text{C} < \text{Si}$
- (4)  $\text{Si} < \text{C} < \text{N} < \text{O} < \text{F}$

**Answer (4)**

83. Match List I with List II

**List I**

**(Quantum Number)**

- A.  $m_l$
- B.  $m_s$
- C.  $l$
- D.  $n$

**List II**

**(Information provided)**

- I. Shape of orbital
- II. Size of orbital
- III. Orientation of orbital
- IV. Orientation of spin of electron

Choose the correct answer from the options given below :

- (1) A-III, B-IV, C-I, D-II
- (2) A-III, B-IV, C-II, D-I
- (3) A-II, B-I, C-IV, D-III
- (4) A-I, B-III, C-II, D-IV

**Answer (1)**

84. Match List I with List II.

**List I**

**(Compound)**

- A.  $\text{NH}_3$
- B.  $\text{BrF}_5$
- C.  $\text{XeF}_4$
- D.  $\text{SF}_6$

**List II**

**(Shape/geometry)**

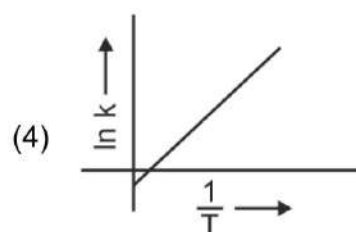
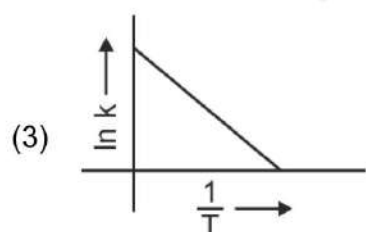
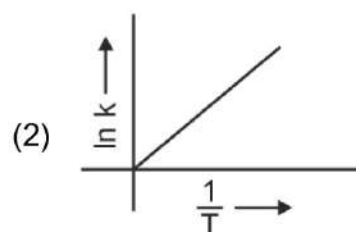
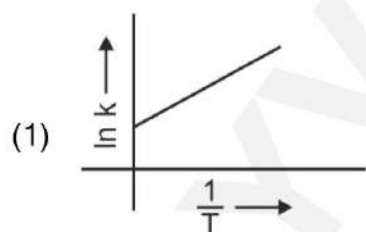
- I. Trigonal Pyramidal
- II. Square Planar
- III. Octahedral
- IV. Square Pyramidal

Choose the correct answer from the options given below:

- (1) A-II, B-IV, C-III, D-I
- (2) A-III, B-IV, C-I, D-II
- (3) A-II, B-III, C-IV, D-I
- (4) A-I, B-IV, C-II, D-III

**Answer (4)**

85. Which plot of  $\ln k$  vs  $\frac{1}{T}$  is consistent with Arrhenius equation?



**Answer (3)**

## SECTION-B

86. The work done during reversible isothermal expansion of one mole of hydrogen gas at 25°C from pressure of 20 atmosphere to 10 atmosphere is

(Given  $R = 2.0 \text{ cal K}^{-1} \text{ mol}^{-1}$ )

- (1) -413.14 calories (2) 413.14 calories  
 (3) 100 calories (4) 0 calorie

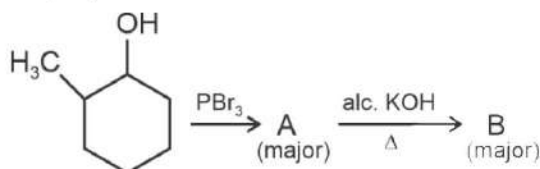
**Answer (1)**

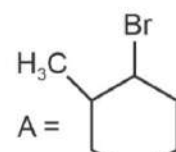
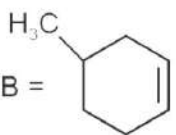
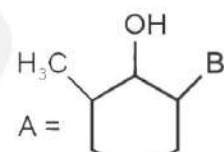
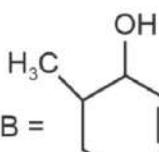
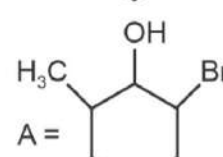
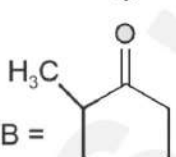
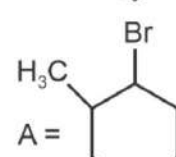
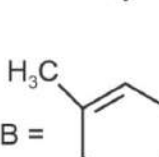
87. Identify the **correct** answer.

- (1)  $\text{BF}_3$  has non-zero dipole moment  
 (2) Dipole moment of  $\text{NF}_3$  is greater than that of  $\text{NH}_3$   
 (3) Three canonical forms can be drawn for  $\text{CO}_3^{2-}$  ion  
 (4) Three resonance structures can be drawn for ozone

**Answer (3)**

88. Major products A and B formed in the following reaction sequence, are



- (1) A =  ; B =  (2) A =  ; B =   
 (3) A =  ; B =  (4) A =  ; B = 

**Answer (4)**

89. The pair of lanthanoid ions which are diamagnetic is

- (1)  $\text{Ce}^{3+}$  and  $\text{Eu}^{2+}$  (2)  $\text{Gd}^{3+}$  and  $\text{Eu}^{3+}$   
 (3)  $\text{Pm}^{3+}$  and  $\text{Sm}^{3+}$  (4)  $\text{Ce}^{4+}$  and  $\text{Yb}^{2+}$

**Answer (4)**

90. A compound X contains 32% of A, 20% of B and remaining percentage of C. Then, the empirical formula of X is :

(Given atomic masses of A = 64; B = 40; C = 32 u)

- (1)  $\text{ABC}_3$  (2)  $\text{AB}_2\text{C}_2$   
 (3)  $\text{ABC}_4$  (4)  $\text{A}_2\text{BC}_2$

**Answer (1)**

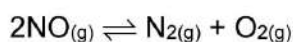
91. Given below are certain cations. Using inorganic qualitative analysis, arrange them in increasing group number from 0 to VI.
- A.  $\text{Al}^{3+}$                                       B.  $\text{Cu}^{2+}$   
C.  $\text{Ba}^{2+}$                                       D.  $\text{Co}^{2+}$   
E.  $\text{Mg}^{2+}$

Choose the correct answer from the options given below.

- (1) B, C, A, D, E                                      (2) E, C, D, B, A  
(3) E, A, B, C, D                                      (4) B, A, D, C, E

**Answer (4)**

92. Consider the following reaction in a sealed vessel at equilibrium with concentrations of  $\text{N}_2 = 3.0 \times 10^{-3} \text{ M}$ ,  $\text{O}_2 = 4.2 \times 10^{-3} \text{ M}$  and  $\text{NO} = 2.8 \times 10^{-3} \text{ M}$ .



If  $0.1 \text{ mol L}^{-1}$  of  $\text{NO}_{(g)}$  is taken in a closed vessel, what will be degree of dissociation ( $\alpha$ ) of  $\text{NO}_{(g)}$  at equilibrium?

- (1) 0.0889                                      (2) 0.8889  
(3) 0.717                                      (4) 0.00889

**Answer (3)**

93. The rate of a reaction quadruples when temperature changes from  $27^\circ\text{C}$  to  $57^\circ\text{C}$ . Calculate the energy of activation.

Given  $R = 8.314 \text{ J K}^{-1} \text{ mol}^{-1}$ ,  $\log 4 = 0.6021$

- (1) 380.4 kJ/mol                                      (2) 3.80 kJ/mol  
(3) 3804 kJ/mol                                      (4) 38.04 kJ/mol

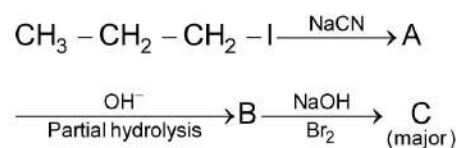
**Answer (4)**

94. During the preparation of Mohr's salt solution (Ferrous ammonium sulphate), which of the following acid is added to prevent hydrolysis of  $\text{Fe}^{2+}$  ion?

- (1) concentrated sulphuric acid                                      (2) dilute nitric acid  
(3) dilute sulphuric acid                                      (4) dilute hydrochloric acid

**Answer (3)**

95. Identify the major product C formed in the following reaction sequence:



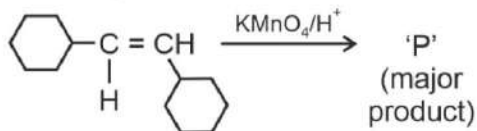
- (1) butylamine                                      (2) butanamide  
(3)  $\alpha$ -bromobutanoic acid                                      (4) propylamine

**Answer (4)**

96. Mass in grams of copper deposited by passing 9.6487 A current through a voltmeter containing copper sulphate solution for 100 seconds is (Given : Molar mass of Cu :  $63 \text{ g mol}^{-1}$ ,  $1 \text{ F} = 96487 \text{ C}$ )
- (1) 0.315 g (2) 31.5 g  
 (3) 0.0315 g (4) 3.15 g

**Answer (1)**

97. For the given reaction:



'P' is

- (1) (2)   
 (3) (4)

**Answer (1)**

98. Given below are two statements :

**Statement I :**  $[\text{Co}(\text{NH}_3)_6]^{3+}$  is a homoleptic complex whereas  $[\text{Co}(\text{NH}_3)_4\text{Cl}_2]^+$  is a heteroleptic complex.

**Statement II :** Complex  $[\text{Co}(\text{NH}_3)_6]^{3+}$  has only one kind of ligands but  $[\text{Co}(\text{NH}_3)_4\text{Cl}_2]^+$  has more than one kind of ligands.

In the light of the above statements, choose the *correct* answer from the options given below.

- (1) Both Statement I and Statement II are false  
 (2) Statement I is true but Statement II is false  
 (3) Statement I is false but Statement II is true  
 (4) Both Statement I and Statement II are true

**Answer (4)**

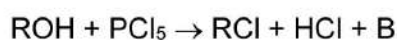
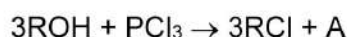
99. The plot of osmotic pressure ( $\Pi$ ) vs concentration ( $\text{mol L}^{-1}$ ) for a solution gives a straight line with slope  $25.73 \text{ L bar mol}^{-1}$ . The temperature at which the osmotic pressure measurement is done is

(Use  $R = 0.083 \text{ L bar mol}^{-1} \text{ K}^{-1}$ )

- (1)  $310^\circ\text{C}$  (2)  $25.73^\circ\text{C}$   
 (3)  $12.05^\circ\text{C}$  (4)  $37^\circ\text{C}$

**Answer (4)**

100. The products A and B obtained in the following reactions, respectively, are



- (1)  $\text{POCl}_3$  and  $\text{H}_3\text{PO}_4$  (2)  $\text{H}_3\text{PO}_4$  and  $\text{POCl}_3$   
 (3)  $\text{H}_3\text{PO}_3$  and  $\text{POCl}_3$  (4)  $\text{POCl}_3$  and  $\text{H}_3\text{PO}_3$

**Answer (3)**

# BOTANY

## SECTION-A

101. Auxin is used by gardeners to prepare weed-free lawns. But no damage is caused to grass as auxin
- (1) promotes abscission of mature leaves only.
  - (2) does not affect mature monocotyledonous plants.
  - (3) can help in cell division in grasses, to produce growth.
  - (4) promotes apical dominance.

**Answer (2)**

102. Lecithin, a small molecular weight organic compound found in living tissues, is an example of:
- (1) Phospholipids
  - (2) Glycerides
  - (3) Carbohydrates
  - (4) Amino acids

**Answer (1)**

103. Match List I with List II

### List I

- Two or more alternative forms of a gene
- Cross of  $F_1$  progeny with homozygous recessive parent
- Cross of  $F_1$  progeny with any of the parents
- Number of chromosome sets in plant

### List II

- Back cross
- Ploidy
- Allele
- Test cross

Choose the **correct** answer from the options given below:

- (1) A-II, B-I, C-III, D-IV
- (2) A-III, B-IV, C-I, D-II
- (3) A-IV, B-III, C-II, D-I
- (4) A-I, B-II, C-III, D-IV

**Answer (2)**

104. Identify the set of **correct** statements:

- The flowers of *Vallisneria* are colourful and produce nectar.
- The flowers of water lily are not pollinated by water.
- In most of water-pollinated species, the pollen grains are protected from wetting.
- Pollen grains of some hydrophytes are long and ribbon like.
- In some hydrophytes, the pollen grains are carried passively inside water.

Choose the correct answer from the options given below.

- (1) A, B, C and D only
- (2) A, C, D and E only
- (3) B, C, D and E only
- (4) C, D and E only

**Answer (3)**



105. List of endangered species was released by

- (1) WWF
- (2) FOAM
- (3) IUCN
- (4) GEAC

**Answer (3)**

106. What is the fate of a piece of DNA carrying only gene of interest which is transferred into an alien organism?

- A. The piece of DNA would be able to multiply itself independently in the progeny cells of the organism.
- B. It may get integrated into the genome of the recipient.
- C. It may multiply and be inherited along with the host DNA.
- D. The alien piece of DNA is not an integral part of chromosome.
- E. It shows ability to replicate.

Choose the correct answer from the options given below:

- (1) D and E only
- (2) B and C only
- (3) A and E only
- (4) A and B only

**Answer (2)**

107. Which of the following are required for the dark reaction of photosynthesis?

- A. Light
- B. Chlorophyll
- C.  $\text{CO}_2$
- D. ATP
- E. NADPH

Choose the **correct** answer from the options given below:

- (1) B, C and D only
- (2) C, D and E only
- (3) D and E only
- (4) A, B and C only

**Answer (2)**

108. The type of conservation in which the threatened species are taken out from their natural habitat and placed in special setting where they can be protected and given special care is called

- (1) Biodiversity conservation
- (2) Semi-conservative method
- (3) Sustainable development
- (4) *in-situ* conservation

**Answer (1)**

109. Given below are two statements:

**Statement I** : Bt toxins are insect group specific and coded by a gene *cry* IAc.

**Statement II** : Bt toxin exists as inactive protoxin in *B. thuringiensis*. However, after ingestion by the insect the inactive protoxin gets converted into active form due to acidic pH of the insect gut.

In the light of the above statements, choose the correct answer from the options given below:

- (1) Both Statement I and Statement II are false
- (2) Statement I is true but Statement II is false
- (3) Statement I is false but Statement II is true
- (4) Both Statement I and Statement II are true

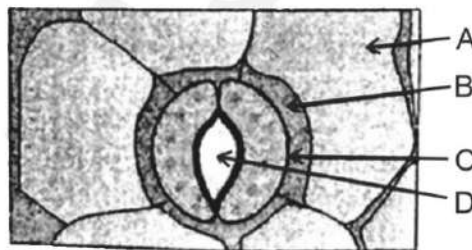
**Answer (2)**

110. A transcription unit in DNA is defined primarily by the three regions in DNA and these are with respect to upstream and down stream end;

- (1) Structural gene, Transposons, Operator gene
- (2) Inducer, Repressor, Structural gene
- (3) Promotor, Structural gene, Terminator
- (4) Repressor, Operator gene, Structural gene

**Answer (3)**

111. In the given figure, which component has thin outer walls and highly thickened inner walls?



- (1) D
- (2) A
- (3) B
- (4) C

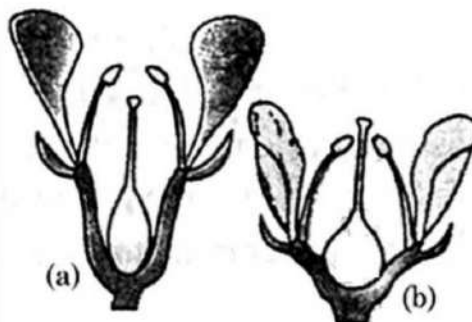
**Answer (4)**

112. Hind II always cuts DNA molecules at a particular point called recognition sequence and it consists of:

- (1) 6 bp
- (2) 4 bp
- (3) 10 bp
- (4) 8 bp

**Answer (1)**

113. Identify the type of flowers based on the position of calyx, corolla and androecium with respect to the ovary from the given figures (a) and (b)



- (1) (a) Hypogynous; (b) Epigynous  
 (2) (a) Perigynous; (b) Epigynous  
 (3) (a) Perigynous; (b) Perigynous  
 (4) (a) Epigynous; (b) Hypogynous

**Answer (3)**

114. Which of the following is an example of actinomorphic flower?

- (1) *Cassia*  
 (2) *Pisum*  
 (3) *Sesbania*  
 (4) *Datura*

**Answer (4)**

115. Which one of the following is not a criterion for classification of fungi?

- (1) Mode of nutrition  
 (2) Mode of spore formation  
 (3) Fruiting body  
 (4) Morphology of mycelium

**Answer (1)**

116. The equation of Verhulst-Pearl logistic growth is  $\frac{dN}{dt} = rN \left[ \frac{K - N}{K} \right]$ .

From this equation, K indicates:

- (1) Biotic potential  
 (2) Carrying capacity  
 (3) Population density  
 (4) Intrinsic rate of natural increase

**Answer (2)**

117. Which one of the following can be explained on the basis of Mendel's Law of Dominance?

- A. Out of one pair of factors one is dominant and the other is recessive.  
 B. Alleles do not show any expression and both the characters appear as such in  $F_2$  generation.  
 C. Factors occur in pairs in normal diploid plants.  
 D. The discrete unit controlling a particular character is called factor.  
 E. The expression of only one of the parental characters is found in a monohybrid cross.

Choose the correct answer from the options given below:

- (1) A, C, D and E only  
 (2) B, C and D only  
 (3) A, B, C, D and E  
 (4) A, B and C only

**Answer (1)**

118. Match List I with List II

	List-I		List-II
A.	<i>Rhizopus</i>	I.	Mushroom
B.	<i>Ustilago</i>	II.	Smut fungus
C.	<i>Puccinia</i>	III.	Bread mould
D.	<i>Agaricus</i>	IV.	Rust fungus

Choose the correct answer from the options given below:

- (1) A-I, B-III, C-II, D-IV
- (2) A-III, B-II, C-I, D-IV
- (3) A-IV, B-III, C-II, D-I
- (4) A-III, B-II, C-IV, D-I

**Answer (4)**

119. Inhibition of Succinic dehydrogenase enzyme by malonate is a classical example of:

- (1) Feedback inhibition
- (2) Competitive inhibition
- (3) Enzyme activation
- (4) Cofactor inhibition

**Answer (2)**

120. Formation of interfascicular cambium from fully developed parenchyma cells is an example for

- (1) Redifferentiation
- (2) Dedifferentiation
- (3) Maturation
- (4) Differentiation

**Answer (2)**

121. A pink flowered Snapdragon plant was crossed with a red flowered Snapdragon plant. What type of phenotype/s is/are expected in the progeny?

- (1) Red flowered as well as pink flowered plants
- (2) Only pink flowered plants
- (3) Red, Pink as well as white flowered plants
- (4) Only red flowered plants

**Answer (1)**

122. In a plant, black seed color (BB/Bb) is dominant over white seed color (bb). In order to find out the genotype of the black seed plant, with which of the following genotype will you cross it?

- (1) bb
- (2) Bb
- (3) BB/Bb
- (4) BB

**Answer (1)**

123. Match List I with List II

**List I**

- A. *Clostridium butylicum*
- B. *Saccharomyces cerevisiae*
- C. *Trichoderma polysporum*
- D. *Streptococcus sp.*

**List II**

- I. Ethanol
- II. Streptokinase
- III. Butyric acid
- IV. Cyclosporin-A

Choose the correct answer from the options given below:

- (1) A-II, B-IV, C-III, D-I
- (2) A-III, B-I, C-IV, D-II
- (3) A-IV, B-I, C-III, D-II
- (4) A-III, B-I, C-II, D-IV

**Answer (2)**

124. How many molecules of ATP and NADPH are required for every molecule of CO<sub>2</sub> fixed in the Calvin cycle?

- (1) 2 molecules of ATP and 2 molecules of NADPH
- (2) 3 molecules of ATP and 3 molecules of NADPH
- (3) 3 molecules of ATP and 2 molecules of NADPH
- (4) 2 molecules of ATP and 3 molecules of NADPH

**Answer (3)**

125. The capacity to generate a whole plant from any cell of the plant is called:

- (1) Micropropagation
- (2) Differentiation
- (3) Somatic hybridization
- (4) Totipotency

**Answer (4)**

126. Tropical regions show greatest level of species richness because

- A. Tropical latitudes have remained relatively undisturbed for millions of years, hence more time was available for species diversification.
- B. Tropical environments are more seasonal.
- C. More solar energy is available in tropics.
- D. Constant environments promote niche specialization.
- E. Tropical environments are constant and predictable.

Choose the correct answer from the options given below.

- (1) A and B only
- (2) A, B and E only
- (3) A, B and D only
- (4) A, C, D and E only

**Answer (4)**

127. Match List I with List II

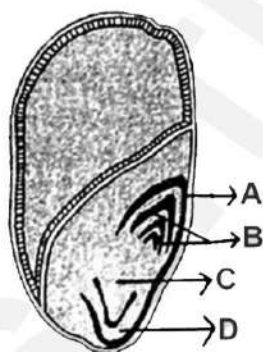
	List-I		List-II
A.	Nucleolus	I.	Site of formation of glycolipid
B.	Centriole	II.	Organization like the cartwheel
C.	Leucoplasts	III.	Site for active ribosomal RNA synthesis
D.	Golgi apparatus	IV.	For storing nutrients

Choose the correct answer from the options given below:

- (1) A-II, B-III, C-I, D-IV  
(2) A-III, B-IV, C-II, D-I  
(3) A-I, B-II, C-III, D-IV  
(4) A-III, B-II, C-IV, D-I

**Answer (4)**

128. Identify the part of the seed from the given figure which is destined to form root when the seed germinates.



- (1) B  
(2) C  
(3) D  
(4) A

**Answer (2)**

129. Spindle fibers attach to kinetochores of chromosomes during

- (1) Metaphase  
(2) Anaphase  
(3) Telophase  
(4) Prophase

**Answer (1)**

130. Given below are two statements:

**Statement I** : Chromosomes become gradually visible under light microscope during leptotene stage.

**Statement II** : The beginning of diplotene stage is recognized by dissolution of synaptonemal complex.

In the light of the above statements, choose the correct answer from the options given below:

- (1) Both Statement I and Statement II are false  
(2) Statement I is true but Statement II is false  
(3) Statement I is false but Statement II is true  
(4) Both Statement I and Statement II are true

**Answer (4)**

131. Given below are two statements:

**Statement I :** Parenchyma is living but collenchyma is dead tissue.

**Statement II :** Gymnosperms lack xylem vessels but presence of xylem vessels is the characteristic of angiosperms.

In the light of the above statements, choose the correct answer from the options given below:

- (1) Both Statement I and Statement II are false
- (2) Statement I is true but Statement II is false
- (3) Statement I is false but Statement II is true
- (4) Both Statement I and Statement II are true

**Answer (3)**

132. These are regarded as major causes of biodiversity loss:

- A. Over exploitation
- B. Co-extinction
- C. Mutation
- D. Habitat loss and fragmentation
- E. Migration

Choose the correct option:

- (1) A, B, C and D only
- (2) A, B and E only
- (3) A, B and D only
- (4) A, C and D only

**Answer (3)**

133. The lactose present in the growth medium of bacteria is transported to the cell by the action of

- (1) Acetylase
- (2) Permease
- (3) Polymerase
- (4) Beta-galactosidase

**Answer (2)**

134. Bulliform cells are responsible for

- (1) Protecting the plant from salt stress.
- (2) Increased photosynthesis in monocots.
- (3) Providing large spaces for storage of sugars.
- (4) Inward curling of leaves in monocots.

**Answer (4)**

135. The cofactor of the enzyme carboxypeptidase is:

- (1) Niacin
- (2) Flavin
- (3) Haem
- (4) Zinc

**Answer (4)**

## SECTION-B

136. Read the following statements and choose the set of correct statements:

In the members of Phaeophyceae,

- A. Asexual reproduction occurs usually by biflagellate zoospores.
- B. Sexual reproduction is by oogamous method only.
- C. Stored food is in the form of carbohydrates which is either mannitol or laminarin.
- D. The major pigments found are chlorophyll a, c and carotenoids and xanthophyll.
- E. Vegetative cells have a cellulosic wall, usually covered on the outside by gelatinous coating of algin.

Choose the correct answer from the options given below:

- (1) B, C, D and E only
- (2) A, C, D and E only
- (3) A, B, C and E only
- (4) A, B, C and D only

**Answer (2)**

137. Match List I with List II

### List I

- A. Robert May
- B. Alexander von Humboldt
- C. Paul Ehrlich
- D. David Tilman

### List II

- I. Species-Area relationship
- II. Long term ecosystem experiment using out door plots
- III. Global species diversity at about 7 million
- IV. Rivet popper hypothesis

Choose the correct answer from the options given below:

- (1) A-III, B-I, C-IV, D-II
- (2) A-I, B-III, C-II, D-IV
- (3) A-III, B-IV, C-II, D-I
- (4) A-II, B-III, C-I, D-IV

**Answer (1)**

138. Given below are two statements:

**Statement I:** In  $C_3$  plants, some  $O_2$  binds to RuBisCO, hence  $CO_2$  fixation is decreased.

**Statement II:** In  $C_4$  plants, mesophyll cells show very little photorespiration while bundle sheath cells do not show photorespiration.

In the light of the above statements, choose the *correct* answer from the options given below:

- (1) Both Statement I and Statement II are false
- (2) Statement I is true but Statement II is false
- (3) Statement I is false but Statement II is true
- (4) Both Statement I and Statement II are true

**Answer (2)**



139. The DNA present in chloroplast is:

- (1) Circular, double stranded
- (2) Linear, single stranded
- (3) Circular, single stranded
- (4) Linear, double stranded

**Answer (1)**

140. In an ecosystem if the Net Primary Productivity (NPP) of first trophic level is  $100x$  ( $\text{kcal m}^{-2}$ )  $\text{yr}^{-1}$ , what would be the GPP (Gross Primary Productivity) of the third trophic level of the same ecosystem?

- (1)  $x(\text{kcal m}^{-2})\text{yr}^{-1}$
- (2)  $10x(\text{kcal m}^{-2})\text{yr}^{-1}$
- (3)  $\frac{100x}{3x}(\text{kcal m}^{-2})\text{yr}^{-1}$
- (4)  $\frac{x}{10}(\text{kcal m}^{-2})\text{yr}^{-1}$

**Answer (2)**

141. Which of the following are fused in somatic hybridization involving two varieties of plants?

- (1) Somatic embryos
- (2) Protoplasts
- (3) Pollens
- (4) Callus

**Answer (2)**

142. Match List I with List II

	List I		List II
A.	Citric acid cycle	I.	Cytoplasm
B.	Glycolysis	II.	Mitochondrial matrix
C.	Electron transport system	III.	Intermembrane space of mitochondria
D.	Proton gradient	IV.	Inner mitochondrial membrane

Choose the correct answer from the options given below:

- (1) A-II, B-I, C-IV, D-III
- (2) A-III, B-IV, C-I, D-II
- (3) A-IV, B-III, C-II, D-I
- (4) A-I, B-II, C-III, D-IV

**Answer (1)**

143. Match List I with List II

**List I**

- A. Frederick Griffith
- B. Francois Jacob & Jacque Monod
- C. Har Gobind Khorana
- D. Meselson & Stahl

**List II**

- I. Genetic code
- II. Semi-conservative mode of DNA replication
- III. Transformation
- IV. *Lac* operon

Choose the correct answer from the options given below:

- (1) A-III, B-IV, C-I, D-II
- (2) A-II, B-III, C-IV, D-I
- (3) A-IV, B-I, C-II, D-III
- (4) A-III, B-II, C-I, D-IV

**Answer (1)**

144. Match List I with List II

**List I  
(Types of Stamens)**

- A. Monoadelphous
- B. Diadelphous
- C. Polyadelphous
- D. Epiphyllous

**List II  
(Example)**

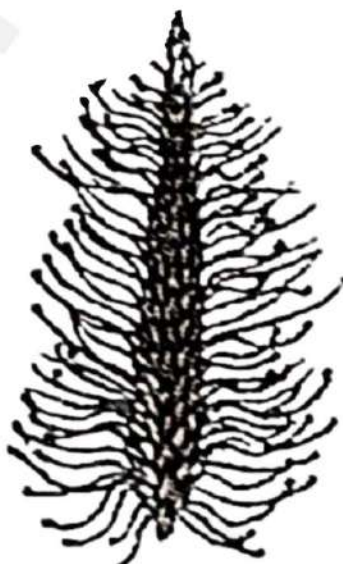
- I. Citrus
- II. Pea
- III. Lily
- IV. China-rose

Choose the correct answer from the options given below:

- (1) A-IV, B-I, C-II, D-III
- (2) A-I, B-II, C-IV, D-III
- (3) A-III, B-I, C-IV, D-II
- (4) A-IV, B-II, C-I, D-III

**Answer (4)**

145. Identify the correct description about the given figure:



- (1) Water pollinated flowers showing stamens with mucilaginous covering.
- (2) Cleistogamous flowers showing autogamy.
- (3) Compact inflorescence showing complete autogamy
- (4) Wind pollinated plant inflorescence showing flowers with well exposed stamens.

**Answer (4)**

146. Match **List-I** with **List-II**

<b>List-I</b>	<b>List-II</b>
A. GLUT-4	I. Hormone
B. Insulin	II. Enzyme
C. Trypsin	III. Intercellular ground substance
D. Collagen	IV. Enables glucose transport into cells

Choose the correct answer from the options given below.

- (1) A-I, B-II, C-III, D-IV  
(2) A-II, B-III, C-IV, D-I  
(3) A-III, B-IV, C-I, D-II  
(4) A-IV, B-I, C-II, D-III

**Answer (4)**

147. Identify the step in tricarboxylic acid cycle, which does not involve oxidation of substrate.

- (1) Succinic acid → Malic acid  
(2) Succinyl-CoA → Succinic acid  
(3) Isocitrate →  $\alpha$ -ketoglutaric acid  
(4) Malic acid → Oxaloacetic acid

**Answer (2)**

148. Spraying sugarcane crop with which of the following plant growth regulators, increases the length of stem, thus, increasing the yield?

- (1) Gibberellin  
(2) Cytokinin  
(3) Abscisic acid  
(4) Auxin

**Answer (1)**

149. Match List I with List II

<b>List I</b>	<b>List II</b>
A. Rose	I. Twisted aestivation
B. Pea	II. Perigynous flower
C. Cotton	III. Drupe
D. Mango	IV. Marginal placentation

Choose the correct answer from the options given below :

- (1) A-I, B-II, C-III, D-IV  
(2) A-IV, B-III, C-II, D-I  
(3) A-II, B-III, C-IV, D-I  
(4) A-II, B-IV, C-I, D-III

**Answer (4)**

150. Which of the following statement is correct regarding the process of replication in *E.coli*?

- (1) The DNA dependent RNA polymerase catalyses polymerization in one direction, that is 5' → 3'  
(2) The DNA dependent DNA polymerase catalyses polymerization in 5' → 3' as well as 3' → 5' direction  
(3) The DNA dependent DNA polymerase catalyses polymerization in 5' → 3' direction  
(4) The DNA dependent DNA polymerase catalyses polymerization in one direction that is 3' → 5'

**Answer (3)**

# ZOOLOGY

## SECTION-A

151. Match List I with List II :

	List I		List II
A.	Pons	I.	Provides additional space for Neurons, regulates posture and balance.
B.	Hypothalamus	II.	Controls respiration and gastric secretions.
C.	Medulla	III.	Connects different regions of the brain.
D.	Cerebellum	IV.	Neuro secretory cells

Choose the correct answer from the options given below :

- (1) A-III, B-IV, C-II, D-I  
(2) A-I, B-III, C-II, D-IV  
(3) A-II, B-I, C-III, D-IV  
(4) A-II, B-III, C-I, D-IV

**Answer (1)**

152. Which of the following is not a component of Fallopian tube?

- (1) Isthmus  
(2) Infundibulum  
(3) Ampulla  
(4) Uterine fundus

**Answer (4)**

153. The "Ti plasmid" of *Agrobacterium tumefaciens* stands for

- (1) Tumor independent plasmid  
(2) Tumor inducing plasmid  
(3) Temperature independent plasmid  
(4) Tumour inhibiting plasmid

**Answer (2)**

154. Match List I with List II :

	List I		List II
A.	Expiratory capacity	I.	Expiratory reserve volume + Tidal volume + Inspiratory reserve volume
B.	Functional residual capacity	II.	Tidal volume + Expiratory reserve volume
C.	Vital capacity	III.	Tidal volume + Inspiratory reserve volume
D.	Inspiratory capacity	IV.	Expiratory reserve volume + Residual volume

Choose the correct answer from the options given below :

- (1) A-III, B-II, C-IV, D-I  
(2) A-II, B-I, C-IV, D-III  
(3) A-I, B-III, C-II, D-IV  
(4) A-II, B-IV, C-I, D-III

**Answer (4)**

155. Given below are two statements : one is labelled as Assertion A and the other is labelled as Reason R :

**Assertion A** : FSH acts upon ovarian follicles in female and Leydig cells in male.

**Reason R** : Growing ovarian follicles secrete estrogen in female while interstitial cells secrete androgen in male human being.

In the light of the above statements, choose the correct answer from the options given below :

- (1) Both A and R are true but R is NOT the correct explanation of A
- (2) A is true but R is false
- (3) A is false but R is true
- (4) Both A and R are true and R is the correct explanation of A

**Answer (3)**

156. Match List I with List II :

	List-I		List-II
A.	Lipase	I.	Peptide bond
B.	Nuclease	II.	Ester bond
C.	Protease	III.	Glycosidic bond
D.	Amylase	IV.	Phosphodiester bond

Choose the correct answer from the options given below :

- (1) A-III, B-II, C-I, D-IV
- (2) A-II, B-IV, C-I, D-III
- (3) A-IV, B-I, C-III, D-II
- (4) A-IV, B-II, C-III, D-I

**Answer (2)**

157. Given below are some stages of human evolution.

Arrange them in correct sequence. (Past to Recent)

- A. *Homo habilis*
- B. *Homo sapiens*
- C. *Homo neanderthalensis*
- D. *Homo erectus*

Choose the correct sequence of human evolution from the options given below:

- (1) B-A-D-C
- (2) C-B-D-A
- (3) A-D-C-B
- (4) D-A-C-B

**Answer (3)**

158. Which of the following are Autoimmune disorders?

- A. Myasthenia gravis
- B. Rheumatoid arthritis
- C. Gout
- D. Muscular dystrophy
- E. Systemic Lupus Erythematosus (SLE)

Choose the most appropriate answer from the options given below:

- (1) A, B & E only
- (2) B, C & E only
- (3) C, D & E only
- (4) A, B & D only

**Answer (1)**

159. Match List I with List II :

**List I**

- A. Common cold
- B. Haemozoin
- C. Widal test
- D. Allergy

**List II**

- I. *Plasmodium*
- II. Typhoid
- III. Rhinoviruses
- IV. Dust mites

Choose the correct answer from the options given below :

- (1) A-I, B-III, C-II, D-IV
- (2) A-III, B-I, C-II, D-IV
- (3) A-IV, B-II, C-III, D-I
- (4) A-II, B-IV, C-III, D-I

**Answer (2)**

160. Match List I with List II :

**List I**

- A. Axoneme
- B. Cartwheel pattern
- C. Crista
- D. Satellite

**List II**

- I. Centriole
- II. Cilia and flagella
- III. Chromosome
- IV. Mitochondria

Choose the correct answer from the options given below :

- (1) A-IV, B-II, C-III, D-I
- (2) A-II, B-IV, C-I, D-III
- (3) A-II, B-I, C-IV, D-III
- (4) A-IV, B-III, C-II, D-I

**Answer (3)**

161. Match List I with List II :

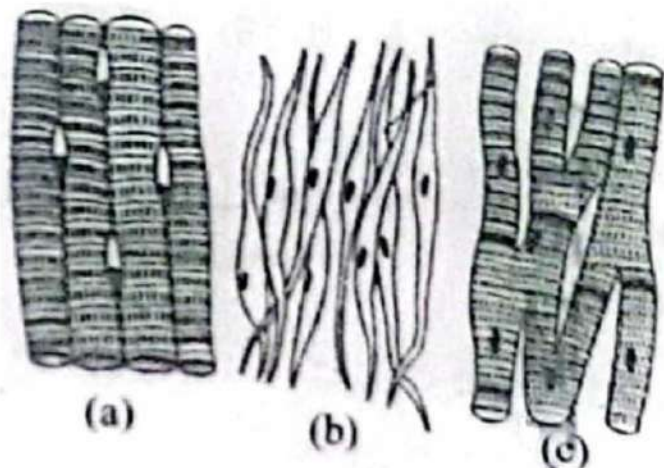
	<b>List I</b>		<b>List II</b>
A.	Pleurobrachia	I.	Mollusca
B.	Radula	II.	Ctenophora
C.	Stomochord	III.	Osteichthyes
D.	Air bladder	IV.	Hemichordata

Choose the correct answer from the options given below :

- (1) A-II, B-I, C-IV, D-III
- (2) A-II, B-IV, C-I, D-III
- (3) A-IV, B-III, C-II, D-I
- (4) A-IV, B-II, C-III, D-I

**Answer (1)**

162. Three types of muscles are given as a, b and c. Identify the correct matching pair along with their location in human body:



Name of muscle/location

- (1) (a) Skeletal - Triceps  
(b) Smooth – Stomach  
(c) Cardiac – Heart
- (2) (a) Skeletal - Biceps  
(b) Involuntary – Intestine  
(c) Smooth – Heart
- (3) (a) Involuntary – Nose tip  
(b) Skeletal – Bone  
(c) Cardiac – Heart
- (4) (a) Smooth - Toes  
(b) Skeletal – Legs  
(c) Cardiac – Heart

**Answer (1)**

163. Match List I with List II :

	<b>List I (Sub Phases of Prophase I)</b>		<b>List II (Specific Characters)</b>
A.	Diakinesis	I.	Synaptonemal complex formation
B.	Pachytene	II.	Completion of terminalisation of chiasmata
C.	Zygotene	III.	Chromosomes look like thin threads
D.	Leptotene	IV.	Appearance of recombination nodules

Choose the correct answer from the options given below

- (1) A-I, B-II, C-IV, D-III  
(2) A-II, B-IV, C-I, D-III  
(3) A-IV, B-III, C-II, D-I  
(4) A-IV, B-II, C-III, D-I

**Answer (2)**

164. Match List I with List II :

	List I		List II
A.	Down's syndrome	I.	11 <sup>th</sup> chromosome
B.	$\alpha$ -Thalassemia	II.	'X' chromosome
C.	$\beta$ -Thalassemia	III.	21 <sup>st</sup> chromosome
D.	Klinefelter's syndrome	IV.	16 <sup>th</sup> chromosome

Choose the correct answer from the options given below :

- (1) A-II, B-III, C-IV, D-I                      (2) A-III, B-IV, C-I, D-II  
(3) A-IV, B-I, C-II, D-III                      (4) A-I, B-II, C-III, D-IV

**Answer (2)**

165. Which of the following statements is incorrect?

- (1) Most commonly used bio-reactors are of stirring type  
(2) Bio-reactors are used to produce small scale bacterial cultures  
(3) Bio-reactors have an agitator system, an oxygen delivery system and foam control system  
(4) A bio-reactor provides optimal growth conditions for achieving the desired product

**Answer (2)**

166. Match List I with List II :

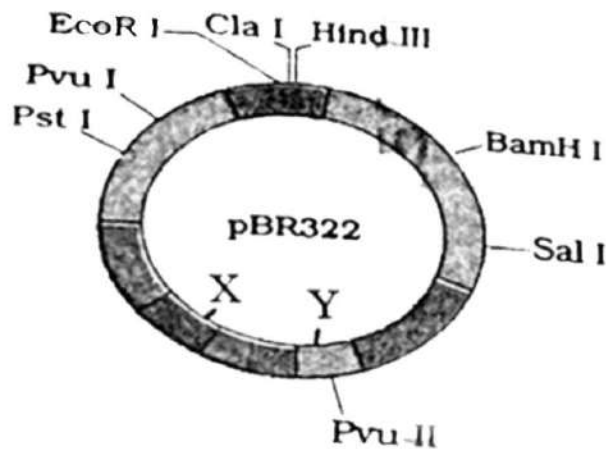
List I	List II
A. <i>Pterophyllum</i>	I. Hag fish
B. <i>Myxine</i>	II. Saw fish
C. <i>Pristis</i>	III. Angel fish
D. <i>Exocoetus</i>	IV. Flying fish

Choose the correct answer from the options given below :

- (1) A-III, B-I, C-II, D-IV                      (2) A-IV, B-I, C-II, D-III  
(3) A-III, B-II, C-I, D-IV                      (4) A-II, B-I, C-III, D-IV

**Answer (1)**

167. The following diagram showing restriction sites in *E. coli* cloning vector pBR322. Find the role of 'X' and 'Y' genes :



- (1) The gene 'X' is responsible for controlling the copy number of the linked DNA and 'Y' for protein involved in the replication of Plasmid.  
(2) The gene 'X' is for protein involved in replication of Plasmid and 'Y' for resistance to antibiotics.  
(3) Gene 'X' is responsible for recognitions sites and 'Y' is responsible for antibiotic resistance.  
(4) The gene 'X' is responsible for resistance to antibiotics and 'Y' for protein involved in the replication of Plasmid.



**Answer (1)**

168. Given below are two statements:

**Statement I:** The presence or absence of hymen is not a reliable indicator of virginity.

**Statement II:** The hymen is torn during the first coitus only.

In the light of the above statements, choose the correct answer from the options given below :

- (1) Both Statement I and Statement II are false
- (2) Statement I is true but Statement II is false
- (3) Statement I is false but Statement II is true
- (4) Both Statement I and Statement II are true

**Answer (2)**

169. Consider the following statements :

- A. Annelids are true coelomates
- B. Poriferans are pseudocoelomates
- C. Aschelminthes are acoelomates
- D. Platyhelminthes are pseudocoelomates

Choose the correct answer from the options given below :

- (1) A only
- (2) C only
- (3) D only
- (4) B only

**Answer (1)**

170. Given below are two statements :

**Statement I :** In the nephron, the descending limb of loop of Henle is impermeable to water and permeable to electrolytes.

**Statement II :** The proximal convoluted tubule is lined by simple columnar brush border epithelium and increases the surface area for reabsorption.

In the light of the above statements, choose the correct answer from the option given below :

- (1) Both Statement I and Statement II are false
- (2) Statement I is true but Statement II is false
- (3) Statement I is false but Statement II is true
- (4) Both Statement I and Statement II are true

**Answer (1)**

171. Following are the stages of cell division :

- A. Gap 2 phase
- B. Cytokinesis
- C. Synthesis phase
- D. Karyokinesis
- E. Gap 1 phase

Choose the correct sequence of stages from the options given below :

- (1) E-B-D-A-C
- (2) B-D-E-A-C
- (3) E-C-A-D-B
- (4) C-E-D-A-B

**Answer (3)**

172. In both sexes of cockroach, a pair of jointed filamentous structures called anal cerci are present on

- (1) 10<sup>th</sup> segment
- (2) 8<sup>th</sup> and 9<sup>th</sup> segment
- (3) 11<sup>th</sup> segment
- (4) 5<sup>th</sup> segment

**Answer (1)**

173. Match List I with List II :

List I	List II
A. Fibrous joints	I. Adjacent vertebrae, limited movement
B. Cartilaginous joints	II. Humerus and Pectoral girdle, rotational movement
C. Hinge joints	III. Skull, don't allow any movement
D. Ball and socket joints	IV. Knee, help in locomotion

Choose the correct answer from the options given below :

- (1) A-I, B-III, C-II, D-IV
- (2) A-II, B-III, C-I, D-IV
- (3) A-III, B-I, C-IV, D-II
- (4) A-IV, B-II, C-III, D-I

**Answer (3)**

174. Which of the following is not a steroid hormone?

- (1) Testosterone
- (2) Progesterone
- (3) Glucagon
- (4) Cortisol

**Answer (3)**

175. Following are the stages of pathway for conduction of an action potential through the heart

- A. AV bundle
- B. Purkinje fibres
- C. AV node
- D. Bundle branches
- E. SA node

Choose the correct sequence of pathway from the options given below

- (1) A-E-C-B-D
- (2) B-D-E-C-A
- (3) E-A-D-B-C
- (4) E-C-A-D-B

**Answer (4)**

176. Match List I with List II

List I	List II
A. Non-medicated IUD	I. Multiload 375
B. Copper releasing IUD	II. Progestogens
C. Hormone releasing IUD	III. Lippes loop
D. Implants	IV. LNG-20

Choose the correct answer from the option given below:

- (1) A-I, B-III, C-IV, D-II
- (2) A-IV, B-I, C-II, D-III
- (3) A-III, B-I, C-IV, D-II
- (4) A-III, B-I, C-II, D-IV

**Answer (3)**

177. Which of the following is not a natural/traditional contraceptive method?

- (1) Periodic abstinence
- (2) Lactational amenorrhea
- (3) Vaults
- (4) Coitus interruptus

**Answer (3)**

178. Which one is the correct product of DNA dependent RNA polymerase to the given template?

3'TACATGGCAAATATCCATTCA5'

- (1) 5'AUGUAAAGUUUUAUAGGUAAGU3'
- (2) 5'AUGUACCGUUUUAUAGGGAAGU3'
- (3) 5'ATGTACCGTTTATAGGTAAGT3'
- (4) 5'AUGUACCGUUUUAUAGGUAAGU3'

**Answer (4)**

179. Which one of the following factors will not affect the Hardy-Weinberg equilibrium?

- (1) Genetic drift
- (2) Gene migration
- (3) Constant gene pool
- (4) Genetic recombination

**Answer (3)**

180. Match List I with List II :

List I	List II
A. Cocaine	I. Effective sedative in surgery
B. Heroin	II. <i>Cannabis sativa</i>
C. Morphine	III. <i>Erythroxylum</i>
D. Marijuana	IV. <i>Papaver somniferum</i>

Choose the correct answer from the options given below:

- (1) A-I, B-III, C-II, D-IV
- (2) A-II, B-I, C-III, D-IV
- (3) A-III, B-IV, C-I, D-II
- (4) A-IV, B-III, C-I, D-II

**Answer (3)**

181. Match List I with List II :

	List I		List II
A.	Typhoid	I.	Fungus
B.	Leishmaniasis	II.	Nematode
C.	Ringworm	III.	Protozoa
D.	Filariasis	IV.	Bacteria

Choose the correct answer from the options given below:

- (1) A-IV, B-III, C-I, D-II
- (2) A-III, B-I, C-IV, D-II
- (3) A-II, B-IV, C-III, D-I
- (4) A-I, B-III, C-II, D-IV

**Answer (1)**

182. Match **List I** with **List II** :

<b>List I</b>	<b>List II</b>
A. $\alpha$ -I antitrypsin	I. Cotton bollworm
B. Cry IAb	II. ADA deficiency
C. Cry IAc	III. Emphysema
D. Enzyme replacement therapy	IV. Corn borer

Choose the correct answer form the options given below:

- (1) A-III, B-I, C-II, D-IV
- (2) A-III, B-IV, C-I, D-II
- (3) A-II, B-IV, C-I, D-III
- (4) A-II, B-I, C-IV, D-III

**Answer (2)**

183. Given below are two statements: One is labelled as Assertion A and the other is labelled as Reason R:

**Assertion A** : Breast-feeding during initial period of infant growth is recommended by doctors for bringing a healthy baby.

**Reason R** : Colostrum contains several antibodies absolutely essential to develop resistance for the new born baby.

In the light of the above statements, choose the most appropriate answer from the options given below:

- (1) Both A and R are correct but R is NOT the correct explanation of A
- (2) A is correct but R is not correct
- (3) A is not correct but R is correct
- (4) Both A and R are correct and R is the correct explanation of A

**Answer (4)**

184. The flippers of the Penguins and Dolphins are the example of the

- (1) Natural selection
- (2) Convergent evolution
- (3) Divergent evolution
- (4) Adaptive radiation

**Answer (2)**

185. Which of the following factors are favourable for the formation of oxyhaemoglobin in alveoli?

- (1) High  $pO_2$  and Lesser  $H^+$  concentration
- (2) Low  $pCO_2$  and High  $H^+$  concentration
- (3) Low  $pCO_2$  and High temperature
- (4) High  $pO_2$  and High  $pCO_2$

**Answer (1)**

**SECTION-B**

186. Match List I with List II:

	List I		List II
A.	Unicellular glandular epithelium	I.	Salivary glands
B.	Compound epithelium	II.	Pancreas
C.	Multicellular glandular epithelium	III.	Goblet cells of alimentary canal
D.	Endocrine glandular epithelium	IV.	Moist surface of buccal cavity

Choose the correct answer from the options given below:

- (1) A-IV, B-III, C-I, D-II
- (2) A-III, B-IV, C-I, D-II
- (3) A-II, B-I, C-IV, D-III
- (4) A-II, B-I, C-III, D-IV

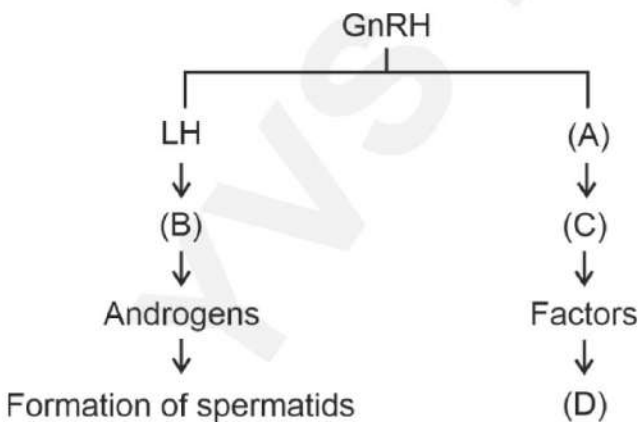
**Answer (2)**

187. Choose the correct statement given below regarding juxta medullary nephron.

- (1) Renal corpuscle of juxta medullary nephron lies in the outer portion of the renal medulla.
- (2) Loop of Henle of juxta medullary nephron runs deep into medulla.
- (3) Juxta medullary nephrons outnumber the cortical nephrons.
- (4) Juxta medullary nephrons are located in the columns of Bertini.

**Answer (2)**

188. Identify the correct option (A), (B), (C), (D) with respect to spermatogenesis.



- (1) ICSH, Interstitial cells, Leydig cells, spermiogenesis.
- (2) FSH, Sertoli cells, Leydig cells, spermatogenesis.
- (3) ICSH, Leydig cells, Sertoli cells, spermatogenesis.
- (4) FSH, Leydig cells, Sertoli cells, spermiogenesis.

**Answer (4)**

189. Match List I with List II :

	List I		List II
A.	P wave	I.	Heart muscles are electrically silent.
B.	QRS complex	II.	Depolarisation of ventricles.
C.	T wave	III.	Depolarisation of atria.
D.	T-P gap	IV.	Repolarisation of ventricles.

Choose the correct answer from the options given below :

- (1) A-III, B-II, C-IV, D-I (2) A-II, B-III, C-I, D-IV  
 (3) A-IV, B-II, C-I, D-III (4) A-I, B-III, C-IV, D-II

**Answer (1)**

190. Given below are two statements :

**Statement I :** Bone marrow is the main lymphoid organ where all blood cells including lymphocytes are produced.

**Statement II :** Both bone marrow and thymus provide micro environments for the development and maturation of T-lymphocytes.

In the light of above statements, choose the most appropriate answer from the options given below :

- (1) Both Statement I and Statement II are incorrect.  
 (2) Statement I is correct but Statement II is incorrect.  
 (3) Statement I is incorrect but Statement II is correct.  
 (4) Both Statement I and Statement II are correct.

**Answer (4)**

191. Given below are two statements:

**Statement I:** Gause's competitive exclusion principle states that two closely related species competing for different resources cannot exist indefinitely.

**Statement II:** According to Gause's principle, during competition, the inferior will be eliminated. This may be true if resources are limiting.

In the light of the above statements, choose the correct answer from the options given below :

- (1) Both Statement I and Statement II are false.  
 (2) Statement I is true but Statement II is false.  
 (3) Statement I is false but Statement II is true.  
 (4) Both Statement I and Statement II are true.

**Answer (3)**

192. Match List I with List II :

	List I		List II
A.	Exophthalmic goiter	I.	Excess secretion of cortisol, moon face & hyperglycemia.
B.	Acromegaly	II.	Hypo-secretion of thyroid hormone and stunted growth.
C.	Cushing's syndrome	III.	Hyper secretion of thyroid hormone & protruding eye balls.
D.	Cretinism	IV.	Excessive secretion of growth hormone.

Choose the correct answer from the options given below :

- (1) A-IV, B-II, C-I, D-III (2) A-III, B-IV, C-II, D-I  
 (3) A-III, B-IV, C-I, D-II (4) A-I, B-III, C-II, D-IV

**Answer (3)**

193. Match List I with List II related to digestive system of cockroach.

	List I		List II
A.	The structures used for storing of food	I.	Gizzard
B.	Ring of 6-8 blind tubules at junction of foregut and midgut.	II.	Gastric Caeca
C.	Ring of 100-150 yellow coloured thin filaments at junction of midgut and hindgut.	III.	Malpighian tubules
D.	The structures used for grinding the food.	IV.	Crop

Choose the correct answer from the options given below:

- (1) A-I, B-II, C-III, D-IV  
 (2) A-IV, B-III, C-II, D-I  
 (3) A-III, B-II, C-IV, D-I  
 (4) A-IV, B-II, C-III, D-I

**Answer (4)**

194. As per ABO blood grouping system, the blood group of father is B<sup>+</sup>, mother is A<sup>+</sup> and child is O<sup>+</sup>. Their respective genotype can be

- A. I<sup>B</sup>i/I<sup>A</sup>i/ii  
 B. I<sup>B</sup>I<sup>B</sup>/I<sup>A</sup>I<sup>A</sup>/ii  
 C. I<sup>A</sup>I<sup>B</sup>/iI<sup>A</sup>/I<sup>B</sup>i  
 D. I<sup>A</sup>i/I<sup>B</sup>i/I<sup>A</sup>i  
 E. ii/I<sup>B</sup>i/I<sup>A</sup>i/I<sup>A</sup>I<sup>B</sup>

Choose the most appropriate answer from the options given below :

- (1) B only  
 (2) C & B only  
 (3) D & E only  
 (4) A only

**Answer (4)**

195. Match List I with List II:

	List I		List II
A.	RNA polymerase III	I.	snRNPs
B.	Termination of transcription	II.	Promotor
C.	Splicing of Exons	III.	Rho factor
D.	TATA box	IV.	SnRNAs, tRNA

Choose the correct answer from the options given below :

- (1) A-III, B-II, C-IV, D-I  
 (2) A-III, B-IV, C-I, D-II  
 (3) A-IV, B-III, C-I, D-II  
 (4) A-II, B-IV, C-I, D-III

**Answer (3)**

196. Match List I with List II:

	List I		List II
A.	Mesozoic Era	I.	Lower invertebrates
B.	Proterozoic Era	II.	Fish & Amphibia
C.	Cenozoic Era	III.	Birds & Reptiles
D.	Paleozoic Era	IV.	Mammals

Choose the correct answer from the options given below :

- (1) A-III, B-I, C-II, D-IV  
 (2) A-I, B-II, C-IV, D-III  
 (3) A-III, B-I, C-IV, D-II  
 (4) A-II, B-I, C-III, D-IV

**Answer (3)**

197. Given below are two statements:

**Statement I:** The cerebral hemispheres are connected by nerve tract known as corpus callosum.

**Statement II:** The brain stem consists of the medulla oblongata, pons and cerebrum.

In the light of the above statements, choose the most appropriate answer from the options given below:

- (1) Both Statement I and Statement II are incorrect.
- (2) Statement I is correct but Statement II is incorrect.
- (3) Statement I is incorrect but Statement II is correct.
- (4) Both Statement I and Statement II are correct.

**Answer (2)**

198. Regarding catalytic cycle of an enzyme action, select the correct sequential steps :

- A. Substrate enzyme complex formation.
- B. Free enzyme ready to bind with another substrate.
- C. Release of products.
- D. Chemical bonds of the substrate broken.
- E. Substrate binding to active site.

Choose the correct answer from the options given below :

- (1) A, E, B, D, C
- (2) B, A, C, D, E
- (3) E, D, C, B, A
- (4) E, A, D, C, B

**Answer (4)**

199. Given below are two statements:

**Statement I:** Mitochondria and chloroplasts both double membranes bound organelles.

**Statement II:** Inner membrane of mitochondria is relatively less permeable, as compared chloroplast.

In the light of the above statements, choose the mis appropriate answer from the options given below:

- (1) Both Statement I and Statement II are incorrect.
- (2) Statement I is correct but Statement II is incorrect.
- (3) Statement I is incorrect but Statement II is correct.
- (4) Both Statement I and Statement II are correct.

**Answer (2)**

200. The following are the statements about non-chordates:

- A. Pharynx is perforated by gill slits.
- B. Notochord is absent.
- C. Central nervous system is dorsal.
- D. Heart is dorsal if present.
- E. Post anal tail is absent.

Choose the most appropriate answer from the options given below:

- (1) A, B & D only
- (2) B, D & E only
- (3) B, C & D only
- (4) A & C only

**Answer (2)**